

当使用 Aspen OPC UA Explorer 连接 OPC UA 服务器时遇到报错：**BadSecurityChecksFailed 'Error received from remote host: Could not verify security on OpenSecureChannel request.'**

编者按

1) 这篇[中文技术支持文章](#)将会告诉我们如何解决升级到 V12 后 aspenONE Process Explorer Admin 显示 "A connection with the server could not be established(Error code:500)"的问题。

2) 您也可以从 AspenTech 技术支持网站[链接](#)中找到对应的中/英文版技术支持文章。

3) 欢迎您点击下方 AspenTech 培训中心链接，查看 AspenTech 中文公开课程安排：

[北京公开课程安排](#)

[上海公开课程安排](#)

[中国其他地区 / 网络虚拟课程安排](#)

4) 在您使用我们的软件，或者查看我们的技术支持文章时，遇到任何问题，欢迎联系 AspenTech 技术支持：

邮箱：esupport@aspentech.com

网址：esupport.aspentech.com

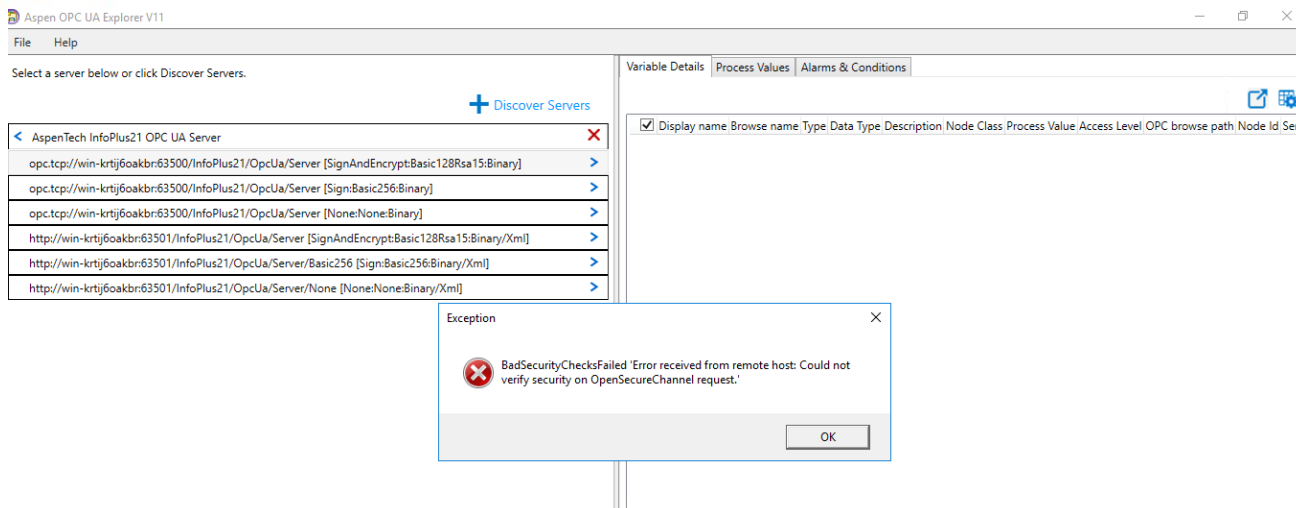
电话：(86) 10 53875867

5) 言归正传，请您欣赏我们的中文技术支持文章：

当使用 Aspen OPC UA Explorer 连接 OPC UA 服务器时，您可能会遇到如下报错：**BadSecurityChecksFailed 'Error received from remote host: Could not verify security on OpenSecureChannel request.'**

问题描述

当使用 Aspen OPC UA Explorer 连接 OPC UA 服务器时，您可能会遇到如下报错：**BadSecurityChecksFailed 'Error received from remote host: Could not verify security on OpenSecureChannel request.'**

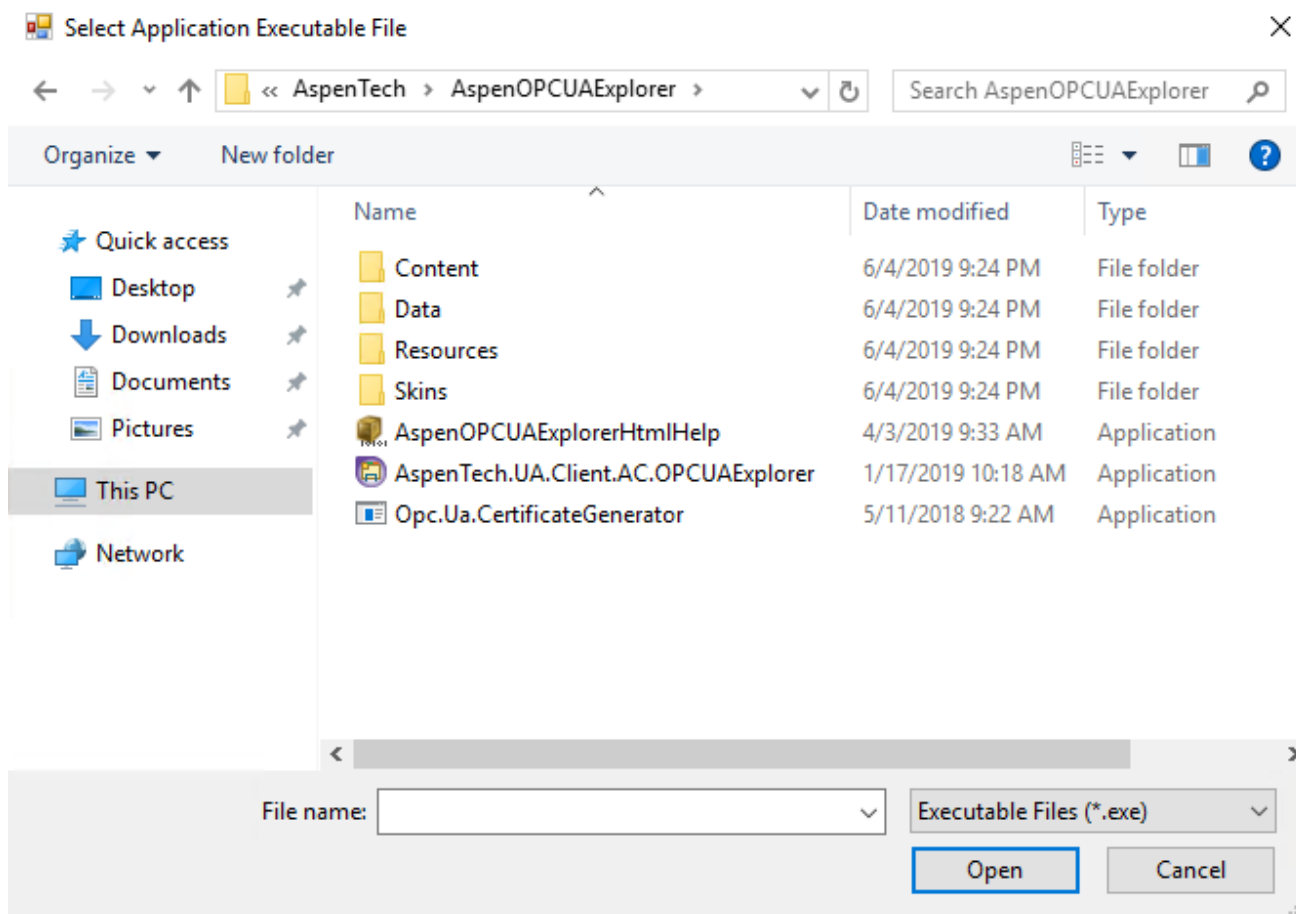


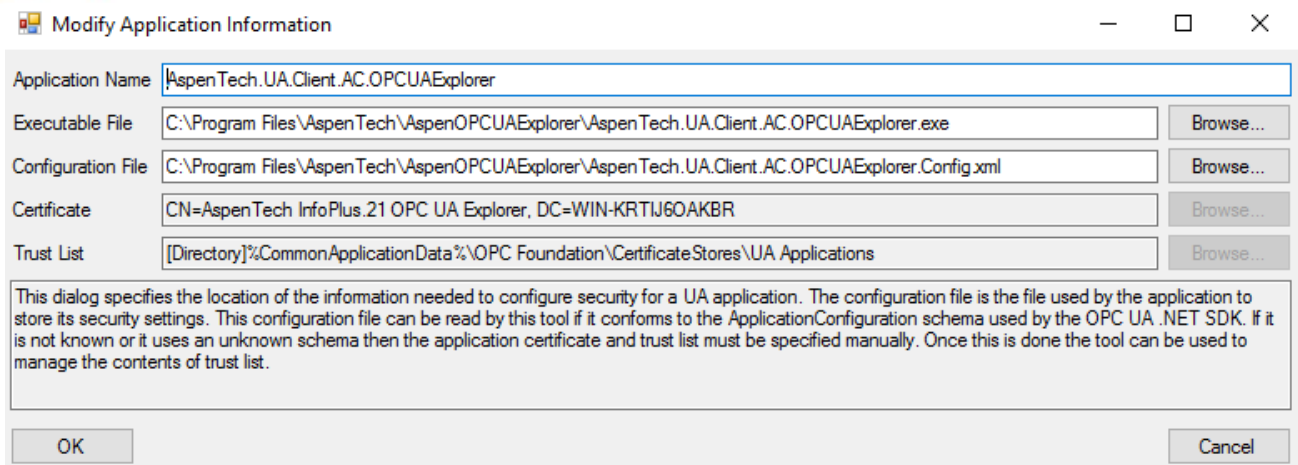
这篇文章为您提供了一个使用 Aspen OPC UA Explorer 连接 IP21 OPC UA 服务器的例子。

解决办法

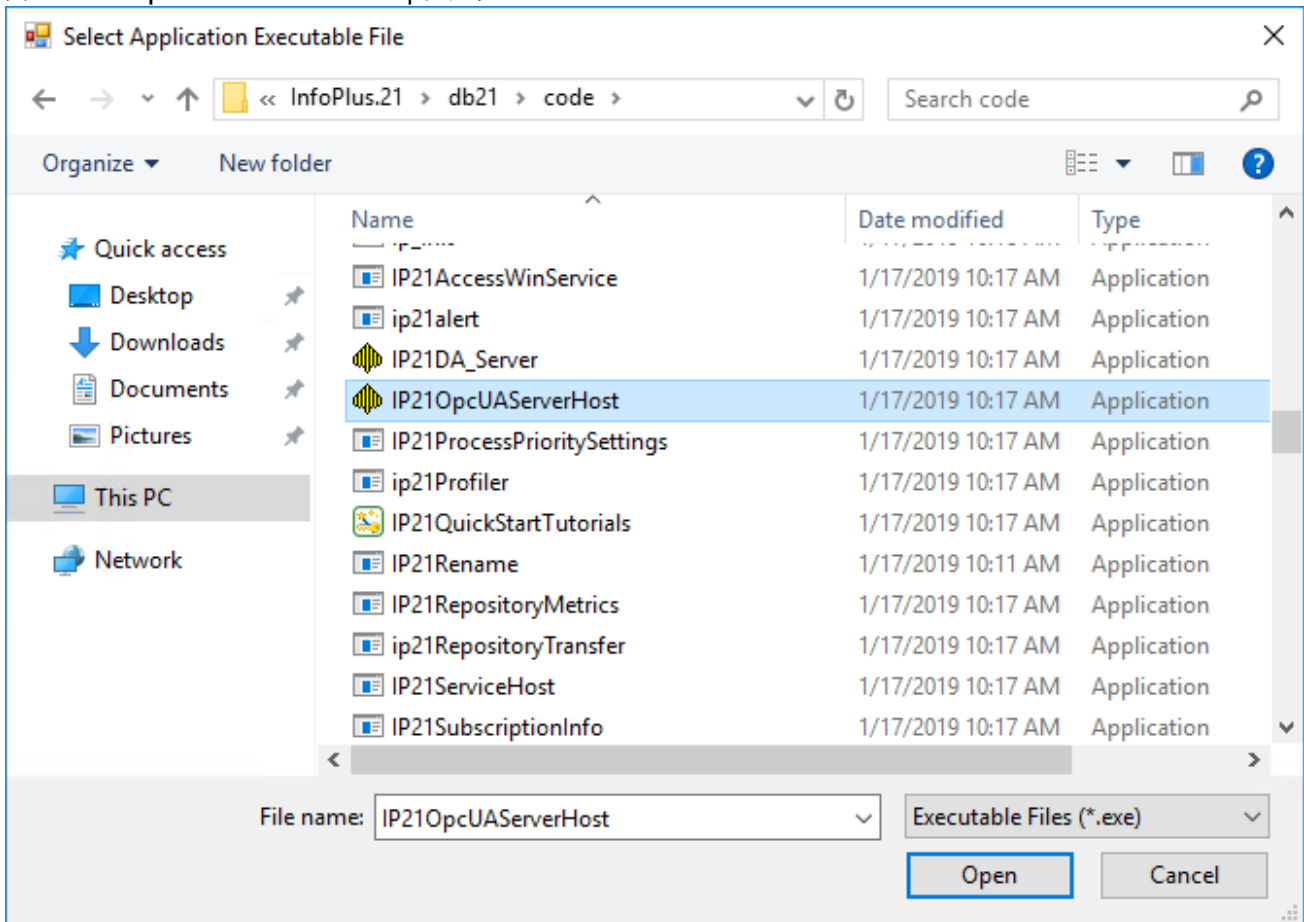
您需要信任证书。

1. 开启 UA Configuration Tool
2. 点击 Find 和 browse 按钮导航到 C:\Program Files\AspenTech\AspenOPCUAExplorer | 打开 “AspenTech.UA.Client.AC.OPCUAExplorer” | 点击 ok。





3. 点击 Find 和 browse 按钮导航到 C:\Program Files\AspenTech\InfoPlus.21\db21\code | 打开 “IP21OpcUAServerHost” | 点击 ok。



Modify Application Information

Application Name:

Executable File:

Configuration File:

Certificate:

Trust List:

This dialog specifies the location of the information needed to configure security for a UA application. The configuration file is the file used by the application to store its security settings. This configuration file can be read by this tool if it conforms to the ApplicationConfiguration schema used by the OPC UA .NET SDK. If it is not known or it uses an unknown schema then the application certificate and trust list must be specified manually. Once this is done the tool can be used to manage the contents of trust list.

4. 点击“Manage Applicaton”选项卡 | 选择 IP21OpcUAServerHost | 点击“View Application Certificate” | 点击 Export 并将证书保存到某个地方。
5. 点击“Manage Applicaton”选项卡 | 选择 t AspenTech.UA.Client.AC.OPCUAExplorer | 点击“View Application Certificate” | 点击 Export 并将证书保存到某个地方。
6. 点击“Manage Security”选项卡 | 选择 IP21OpcUAServerHost | 点击“select Certificate to Trust” | 选择 %CommonApplicationData%\OPC Foundation\CertificateStores\RejectedCertificates | 双击“AspenTech InfoPlus.21 OPC UA Explorer” | 点击 OK | 再次点击 OK。

Manage Certificates in Certificate Store

Location

Store Type:

Store Path:

Filters

Subject Name:

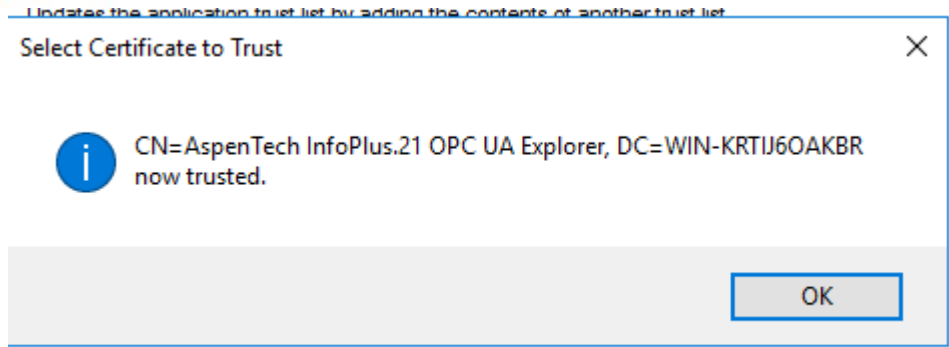
Domain:

Issuer Name:

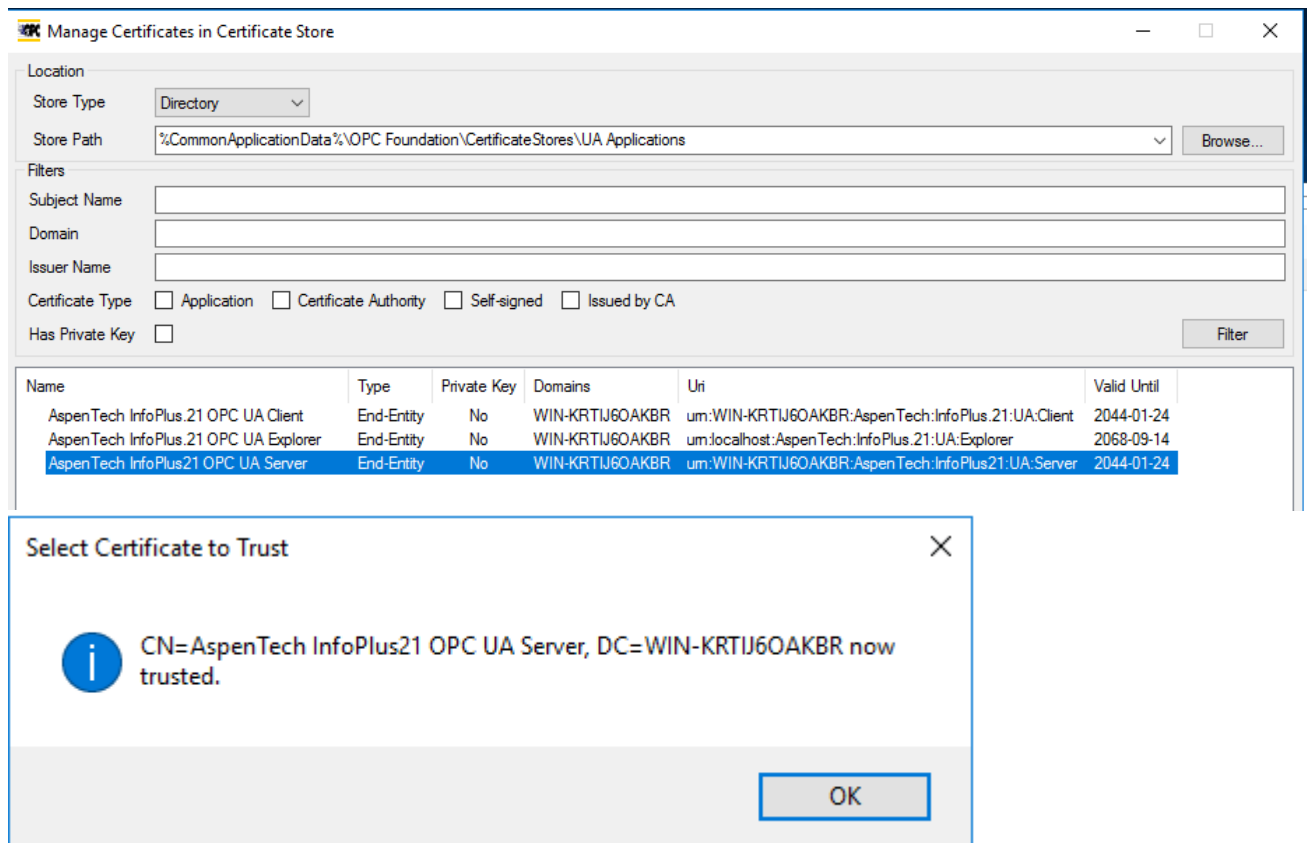
Certificate Type: Application Certificate Authority Self-signed Issued by CA

Has Private Key:

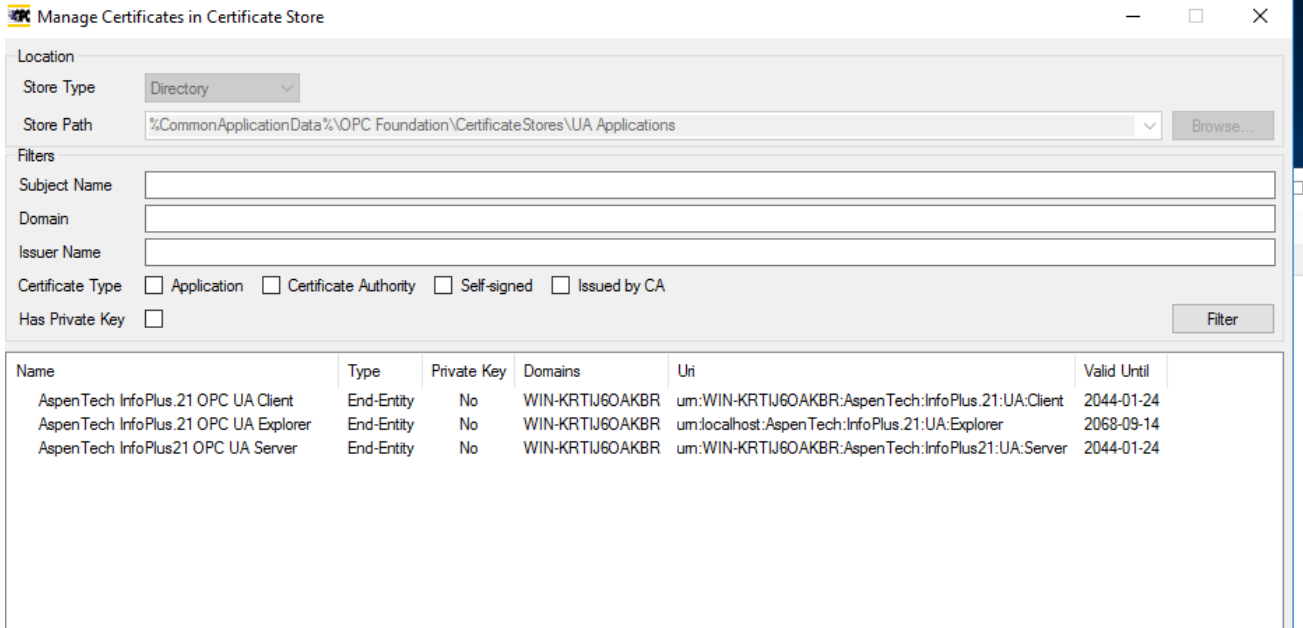
Name	Type	Private Key	Domains	Uri	Valid Until
AspenTech InfoPlus.21 OPC UA Explorer	End-Entity	No	WIN-KRTIJ60AKBR	urn:localhost:AspenTech:InfoPlus.21:UA:Explorer	2068-09-14



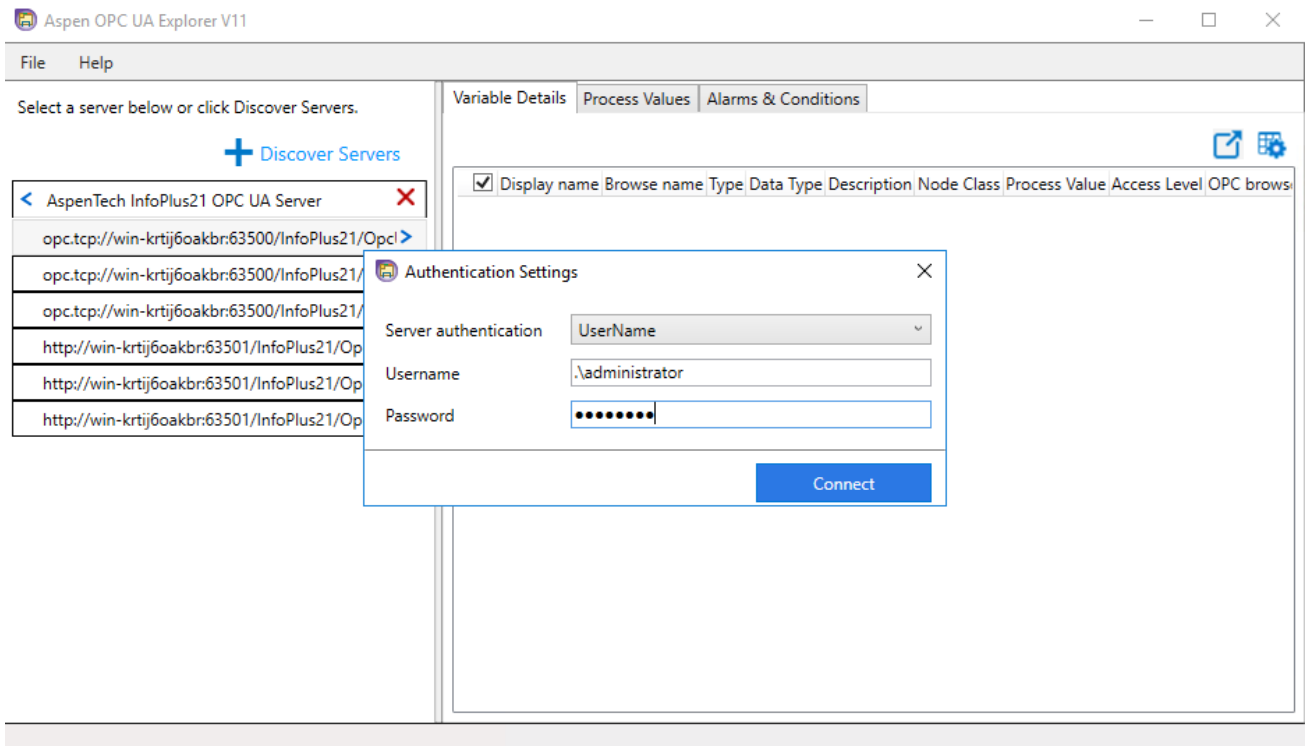
7. 点击“Manage Security”选项卡 | 选择 AspenTech.UA.Client.AC.OPCUAExplorer | 点击“select Certificate to Trust” | 选择%CommonApplicationData%\OPC Foundation\CertificateStores\UA Applications | 双击“AspenTech InfoPlus.21 OPC UA Server” | 点击 OK | 再次点击 OK。

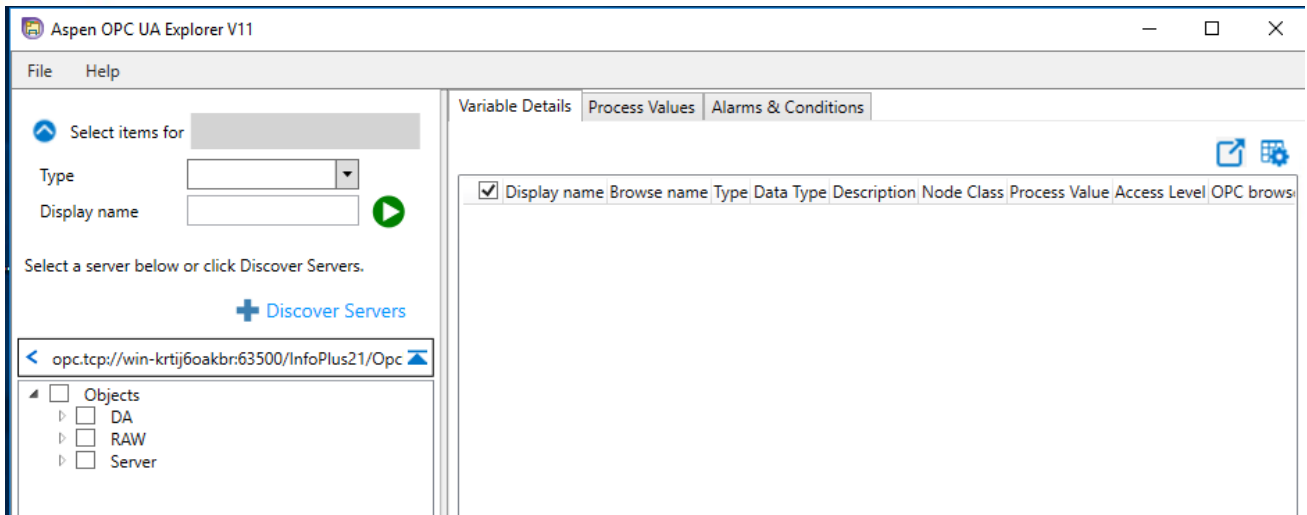


8. 点击“View Trusted Certificate”

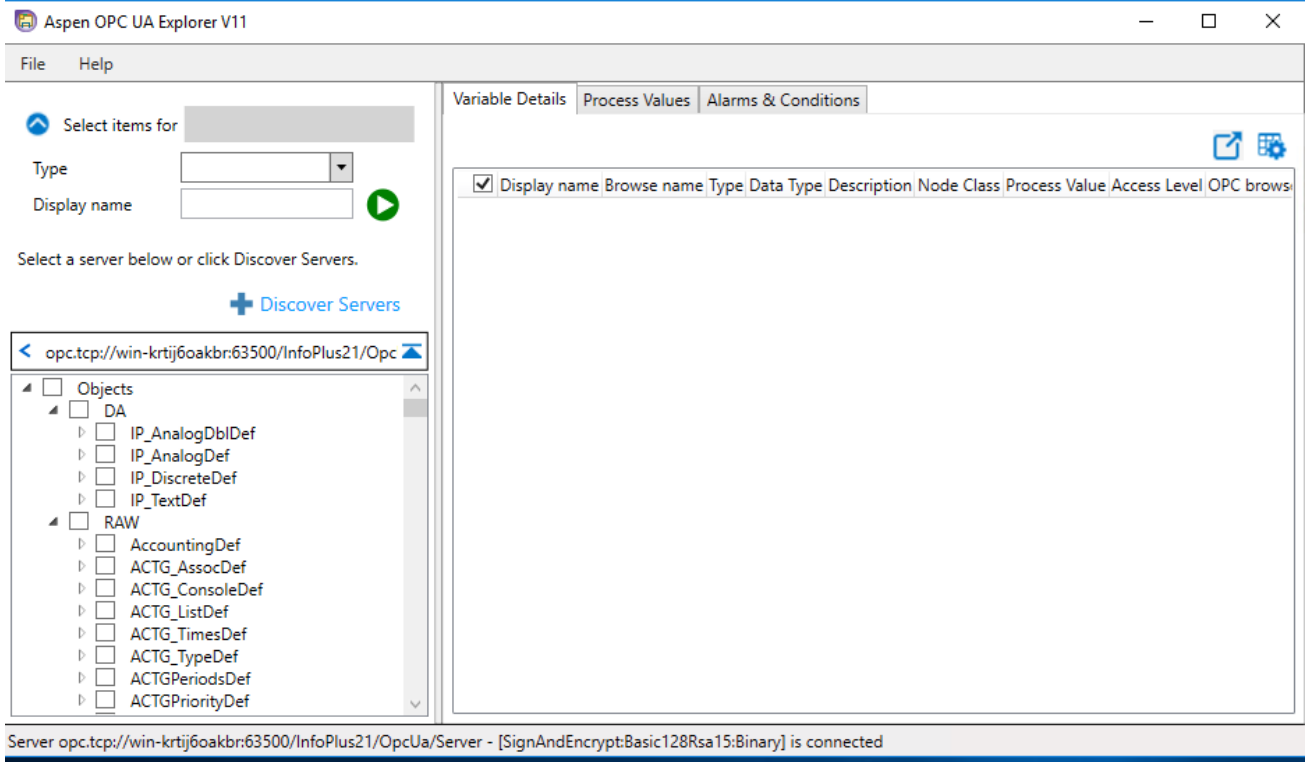


这一次，您应该可以连接成功了。





除了 DA, 您还可以看到一些其他的定义。



关键词

UA

Explorer

Certificate

BadSecurityChecksFailed